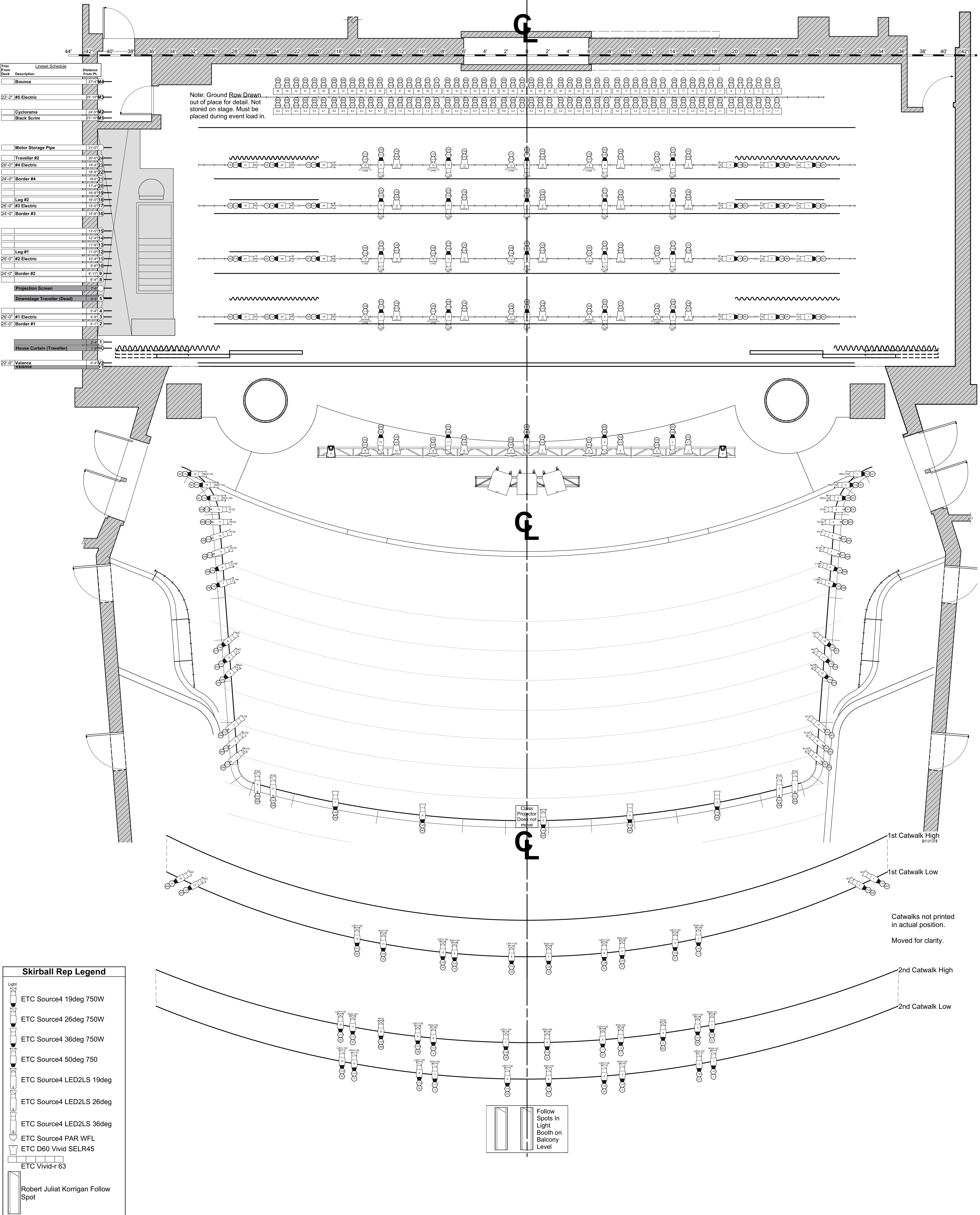


| Trim From Deck | Lineplot Schedule | Description | Distance From PL |
|----------------|-------------------|----------------------------|------------------|
| | | Bounce | 17'-10" |
| 22'-2" | #5 Electric | | 20'-10" |
| | | Cyclorama | 24'-12" |
| | | Black Scrim | 25'-12" |
| | | Motor Storage Pipe | 21'-0" |
| | | Traveller #2 | 20'-0" |
| 26'-0" | #4 Electric | | 19'-0" |
| 24'-0" | Border #4 | | 18'-0" |
| | | Leg #2 | 17'-0" |
| 26'-0" | #3 Electric | | 16'-0" |
| 24'-0" | Border #3 | | 14'-0" |
| | | Leg #1 | 11'-0" |
| 26'-0" | #2 Electric | | 10'-0" |
| 24'-0" | Border #2 | | 8'-0" |
| | | Projection Screen | 7'-0" |
| | | Downstage Traveller (Dead) | 6'-0" |
| | | House Curtain (Traveller) | 2'-0" |
| 22'-0" | Valance | | 0'-4" |

Note: Ground Row Drawn out of place for detail. Not stored on stage. Must be placed during event load in.



| Skirball Rep Legend | |
|---------------------|------------------------------------|
| Light | ETC Source4 19deg 750W |
| | ETC Source4 26deg 750W |
| | ETC Source4 36deg 750W |
| | ETC Source4 50deg 750 |
| | ETC Source4 LED2LS 19deg |
| | ETC Source4 LED2LS 26deg |
| | ETC Source4 LED2LS 36deg |
| | ETC Source4 PAR WFL |
| | ETC D60 Vivid SELR45 |
| | ETC Vivid-r 63 |
| | Robert Juliat Korrigan Follow Spot |
| Static Accessory | USITT 6in 4BarnDoor |
| Typical | Color |
| | Unit Number |
| | Address |
| | Channel |